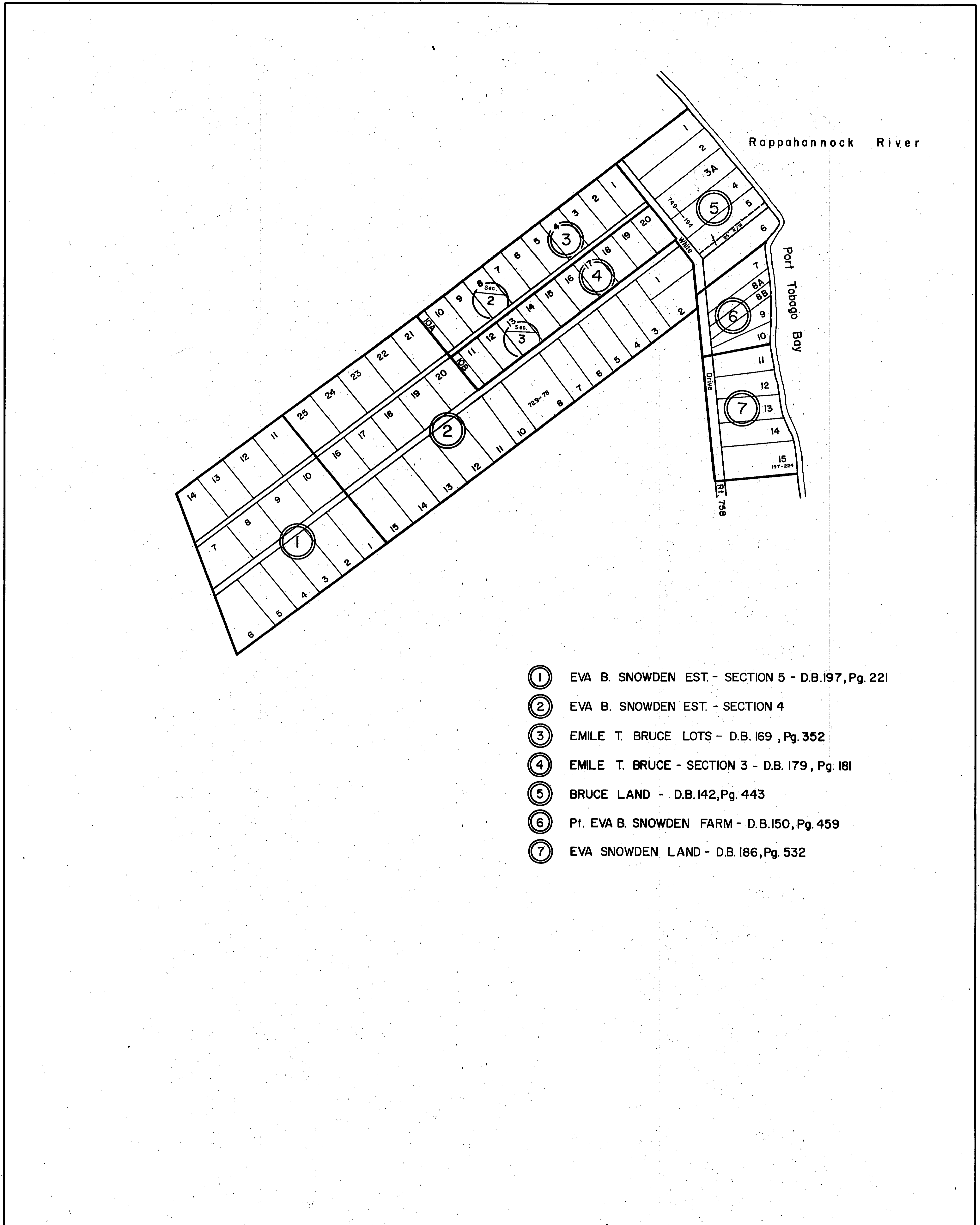
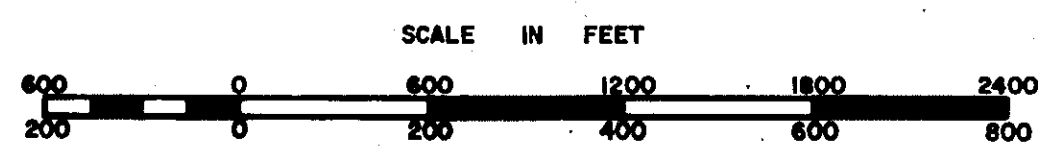


CAROLINE COUNTY



- ① EVA B. SNOWDEN EST. - SECTION 5 - D.B.197, Pg. 221
- ② EVA B. SNOWDEN EST. - SECTION 4
- ③ EMILE T. BRUCE LOTS - D.B. 169 , Pg. 352
- ④ EMILE T. BRUCE - SECTION 3 - D.B. 179, Pg. 181
- ⑤ BRUCE LAND - D.B.142, Pg. 443
- ⑥ Pt. EVA B. SNOWDEN FARM - D.B.150, Pg. 459
- ⑦ EVA SNOWDEN LAND - D.B. 186, Pg. 532



PORT ROYAL DISTRICT

SECTION
INSERT 23A